

Liberia Ebola SitRep no. 118

Ministry of Health and Social Welfare

Sept. 10, 2014

Cases

	National	Bomi County	Bong County	Gbarpolu County	Grand Bassa	Grand Cape Mount	Grand Gedeh	Lofa County	Margibi County	Maryland County	Montserrado County	Nimba County	River Gee County	RiverCess County	Sinoe County
New Case/s (Suspected)	29	0	1	0	0	0	0	0	9	0	18	0	0	0	1
New Case/s (Probable)	28	3	0	0	0	0	0	5	10	0	10	0	0	0	0
New case/s (confirmed)	2	0	0	0	0	1	0	1	0	0	0	0	0	0	0
Total suspected cases	539	4	93	1	21	5	3	53	180	1	144	26	6	0	2
Total probable cases	1078	40	42	0	12	5	0	379	178	5	353	61	3	0	0
Total confirmed cases	790	33	44	0	13	6	0	260	33	0	352	47	0	1	1
Total Number of Confirmed Cases of Sierra Leonean Nationality	14	0	0	0	0	2	0	11	1	0	0	0	0	0	0
Total Number of Confirmed Cases of Guinean Nationality	4	3	0	0	0	0	0	0	0	0	1	0	0	0	0
Cumulative (confirmed, probable, suspected) cases	2407	77	179	1	46	16	3	692	391	6	849	134	9	1	3

Cases among HCWs

	National	Bomi County	Bong County	Gbarpolu County	Grand Bassa	Grand Cape Mount	Grand Gedeh	Lofa County	Margibi County	Maryland County	Montserrado County	Nimba County	River Gee County	RiverCess County	Sinoe County
Newly Reported Cases in HCW on 10th Sept. 2014	1	0	0	0	0	0	0	0	0	0	1	0	0	0	0
Cumulative cases among HCW	169	5	26	0	3	3	0	20	36	0	70	6	0	0	0
Newly Reported deaths in HCW on 10th Sept. 2014	3	0	0	0	0	0	0	0	0	0	1	2	0	0	0
Cumulative deaths among HCW	82	5	6	0	1	0	0	17	19	0	32	2	0	0	0

Isolation and Discharges

	National	Bomi County	Bong County	Gbarpolu County	Grand Bassa	Grand Cape Mount	Grand Gedeh	Lofa County	Margibi County	Maryland County	Montserrado County	Nimba County	River Gee County	RiverCess County	Sinoe County
New Admission on Sept. 10, 2014	5	0	0	0	0	0	0	5	0	0	0	0	0	0	0
Total no. currently in Treatment Units	49	0	0	0	0	0	0	49	0	0	0	0	0	0	0
Total discharges on 10th Sept. 2014	2	0	0	0	0	0	0	2	0	0	0	0	0	0	0
Cumulative admission/isolation	49	0	0	0	0	0	0	49	0	0	0	0	0	0	0

Deaths

	National	Bomi County	Bong County	Gbarpolu County	Grand Bassa	Grand Cape Mount	Grand Gedeh	Lofa County	Margibi County	Maryland County	Montserrado County	Nimba County	River Gee County	RiverCess County	Sinoe County
Newly reported deaths 10th Sept. 2014	46	2	1	0	0	1	0	5	12	0	22	3	0	0	0
Total death/s in confirmed cases	563	27	12	0	13	6	0	167	34	0	271	32	0	0	1
Total death/s in probable cases	472	22	14	0	3	3	0	166	72	4	141	46	0	1	0
Total death/s in suspected cases	261	0	23	0	3	5	2	35	56	0	120	12	5	0	0
Total death/s in confirmed, probable, suspected cases	1296	49	49	0	19	14	2	368	162	4	532	90	5	1	1
Case Fatality Rate (CFR) - Confirmed & Probable Cases	55.4	67	30	0	64	82	0	52	50	80	58	72	0	100	100

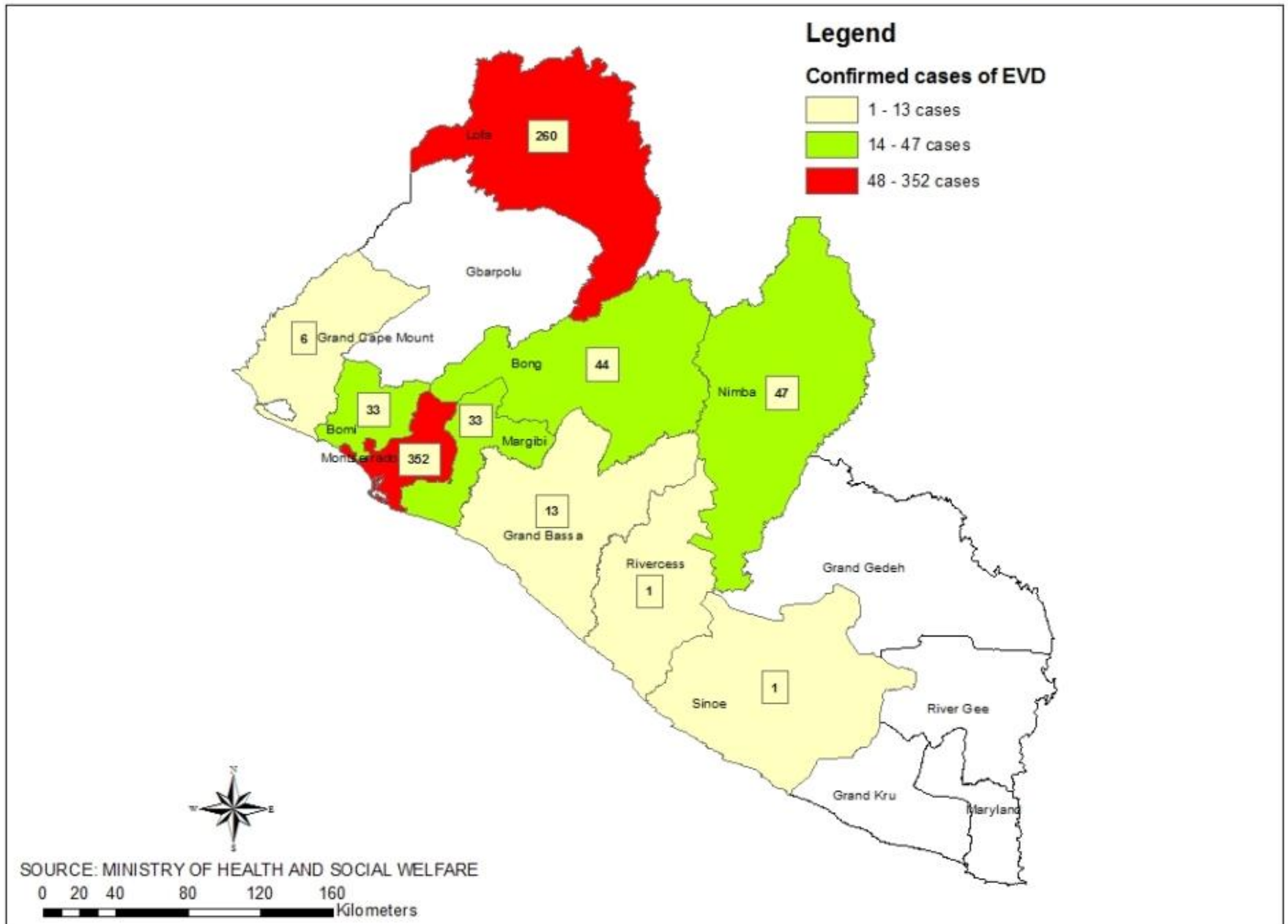
Laboratory

	National	Bomi County	Bong County	Gbarpolu County	Grand Bassa	Grand Cape Mount	Grand Gedeh	Lofa County	Margibi County	Maryland County	Montserrado County	Nimba County	River Gee County	RiverCess County	Sinoe County
Specimens collected on 10th Sept. 2014	5	5	0	0	0	0	0	0	0	0	0	0	0	0	0
Specimens pending for testing	24	5	0	0	0	0	0	0	14	0	0	5	0	0	0
Total specimens tested	32	0	0	0	0	11	0	21	0	0	0	0	0	0	0

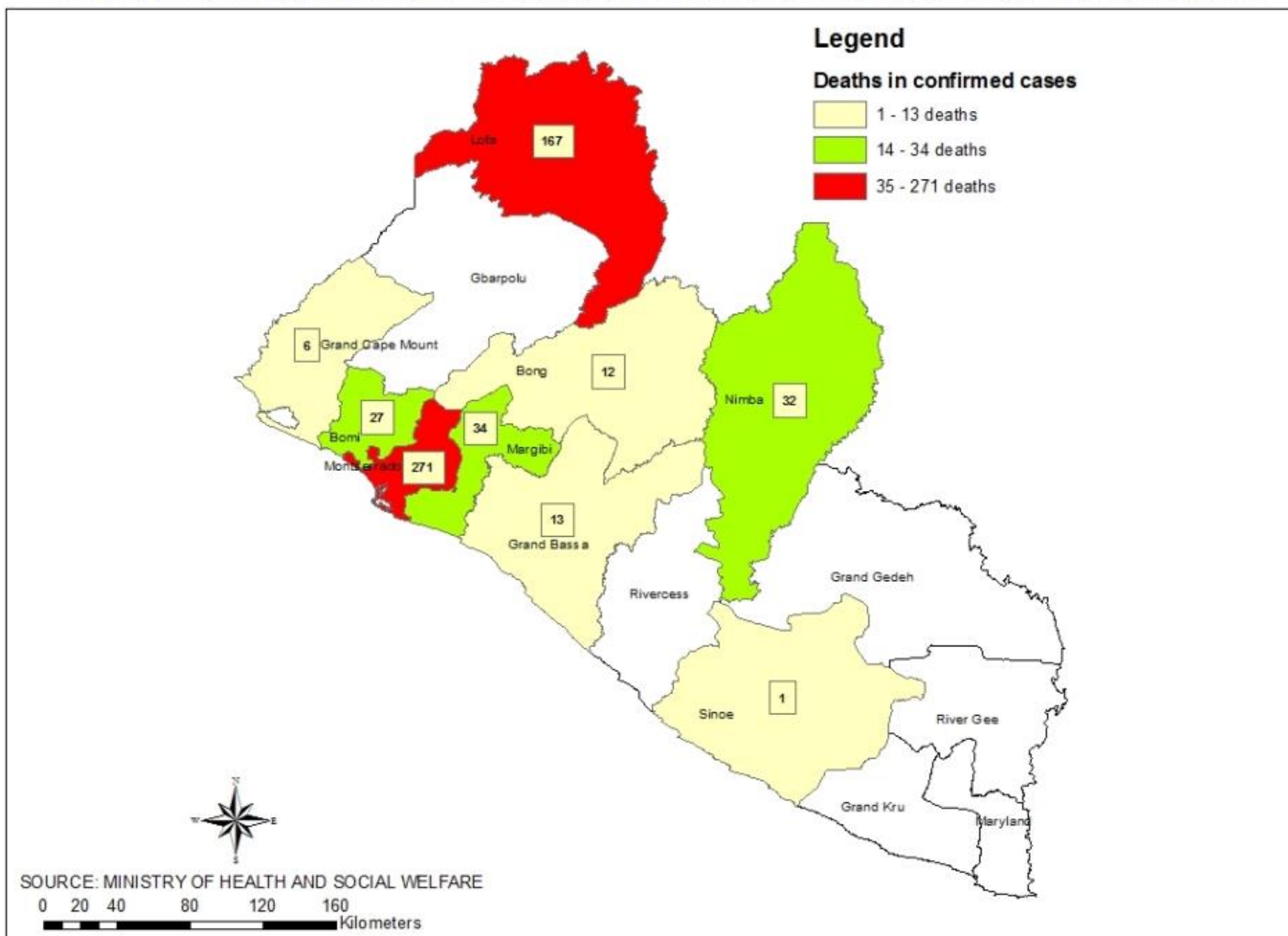
Ebola Disease Outbreak (March 22-Sept. 10, 2014)

Table 3: Cumulative Ebola Disease Outbreak in Liberia (March 22 -Sept. 10, 2014)															
Cases															
	National	Bomi County	Bong County	Gbarpolu County	Grand Bassa	Grand Cape Mount	Grand Gedeh	Lofa County	Margibi County	Maryland County	Montserrado County	Nimba County	River Gee County	RiverCess County	Sinoe County
Total Case/s (Suspected)	539	4	93	1	21	5	3	53	180	1	144	26	6	0	2
Total Case/s (Probable)	1080	40	42	0	12	5	0	381	178	5	353	61	3	0	0
Total case/s (confirmed)	796	33	44	0	13	6	0	264	35	0	352	47	0	1	1
Cumulative (confirmed, probable, suspected) cases	2415	77	179	1	46	16	3	698	393	6	849	134	9	1	3
Health Care Workers															
Cumulative cases among HCW	171	5	26	0	3	3	0	22	36	0	70	6	0	0	0
Cumulative deaths among HCW	84	5	6	0	1	0	0	19	19	0	32	2	0	0	0
Deaths															
Total death/s in confirmed cases	569	27	12	0	13	6	0	171	36	0	271	32	0	0	1
Total death/s in probable cases	474	22	14	0	3	3	0	168	72	4	141	46	0	1	0
Total death/s in suspected cases	264	0	23	0	3	5	2	36	57	0	121	12	5	0	0
Total death/s in confirmed, probable, suspected cases	1307	49	49	0	19	14	2	375	165	4	533	90	5	1	1
Cumulative CFR (March 22 - Sept. 10, 2014)	55.6	67.1	30.2	#####	64.0	81.8	#####	52.6	50.7	80.0	58.4	72.2	0.0	100.0	100.0

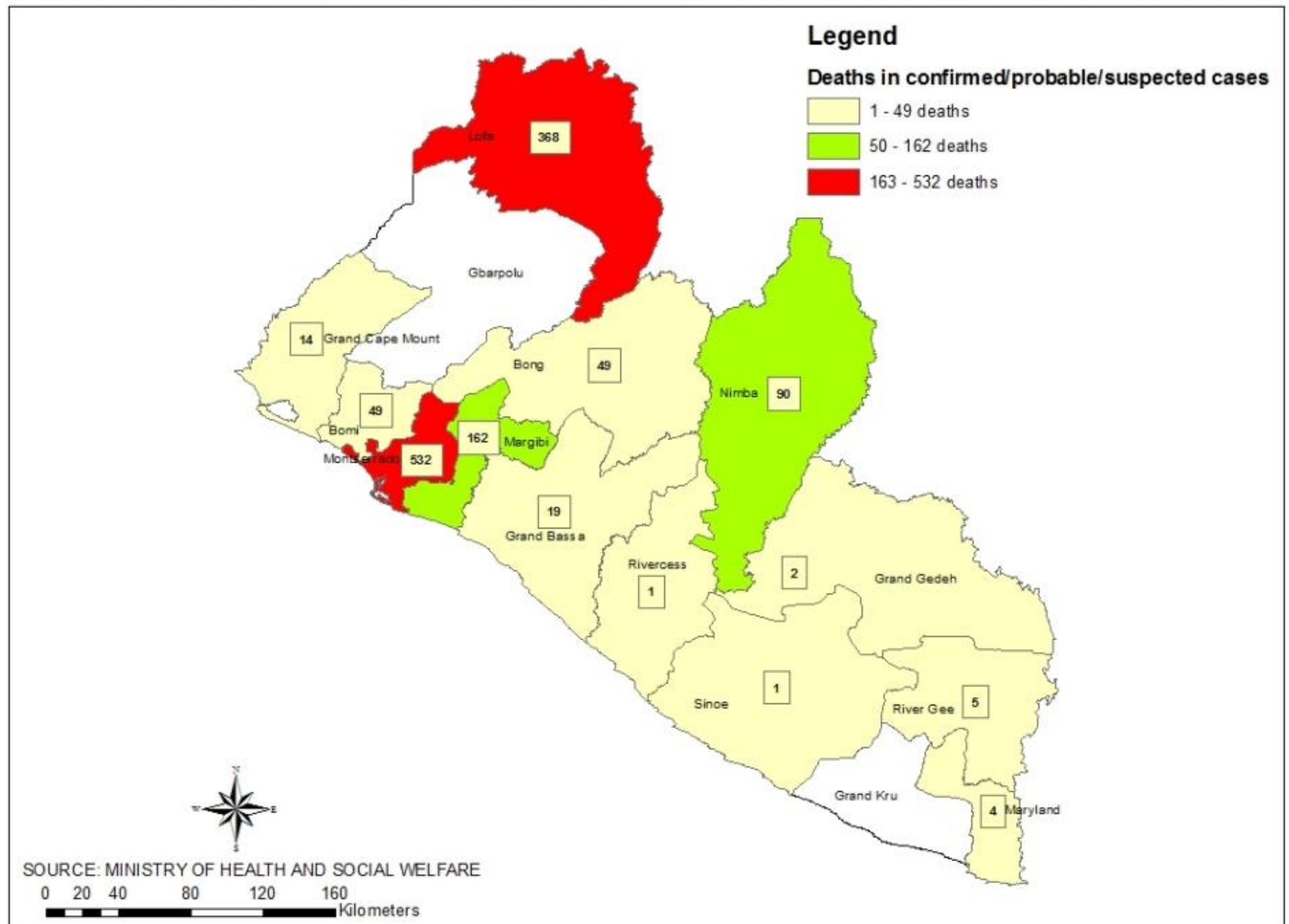
CONFIRMED CASES OF EBOLA VIRUS DISEASE SINCE MAY 29th TO SEPTEMBER 10th 2014



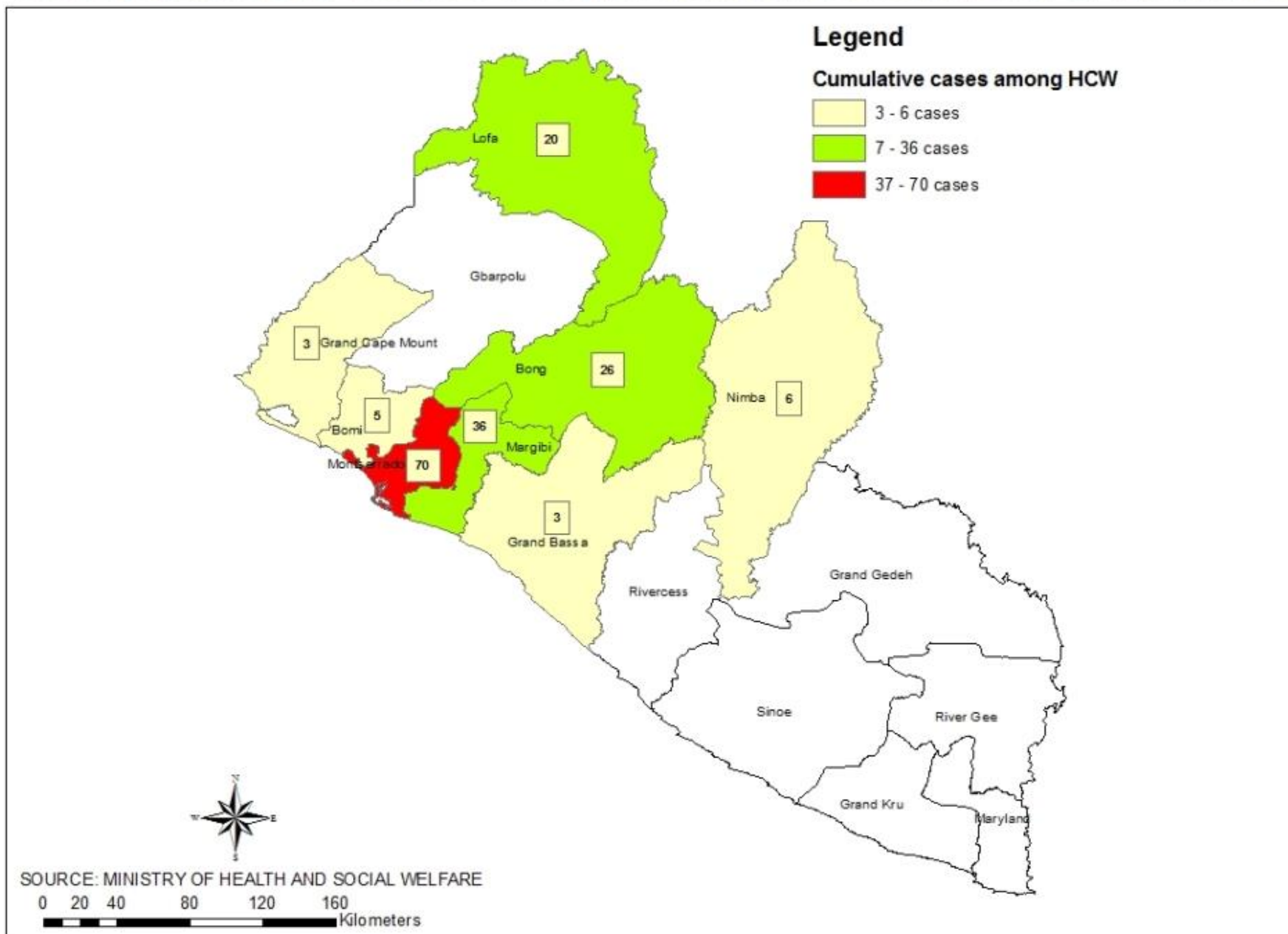
DEATHS IN CONFIRMED CASES OF EBOLA VIRUS DISEASE SINCE MAY 29th TO SEPTEMBER 10th 2014



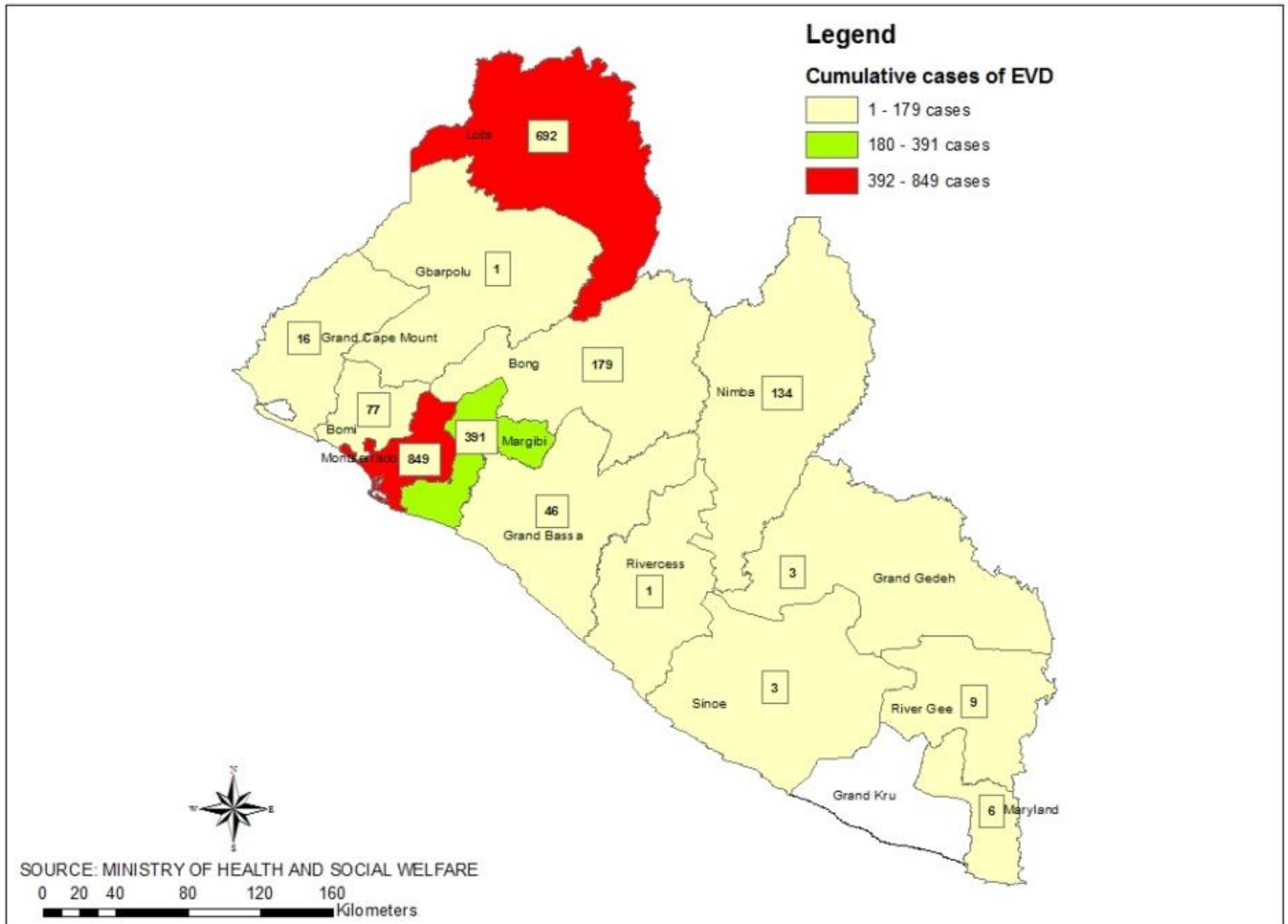
DEATHS IN CONFIRMED/PROBABLE/SUSPECTED CASES OF EBOLA VIRUS DISEASE SINCE MAY 29th TO SEPTEMBER 10th 2014



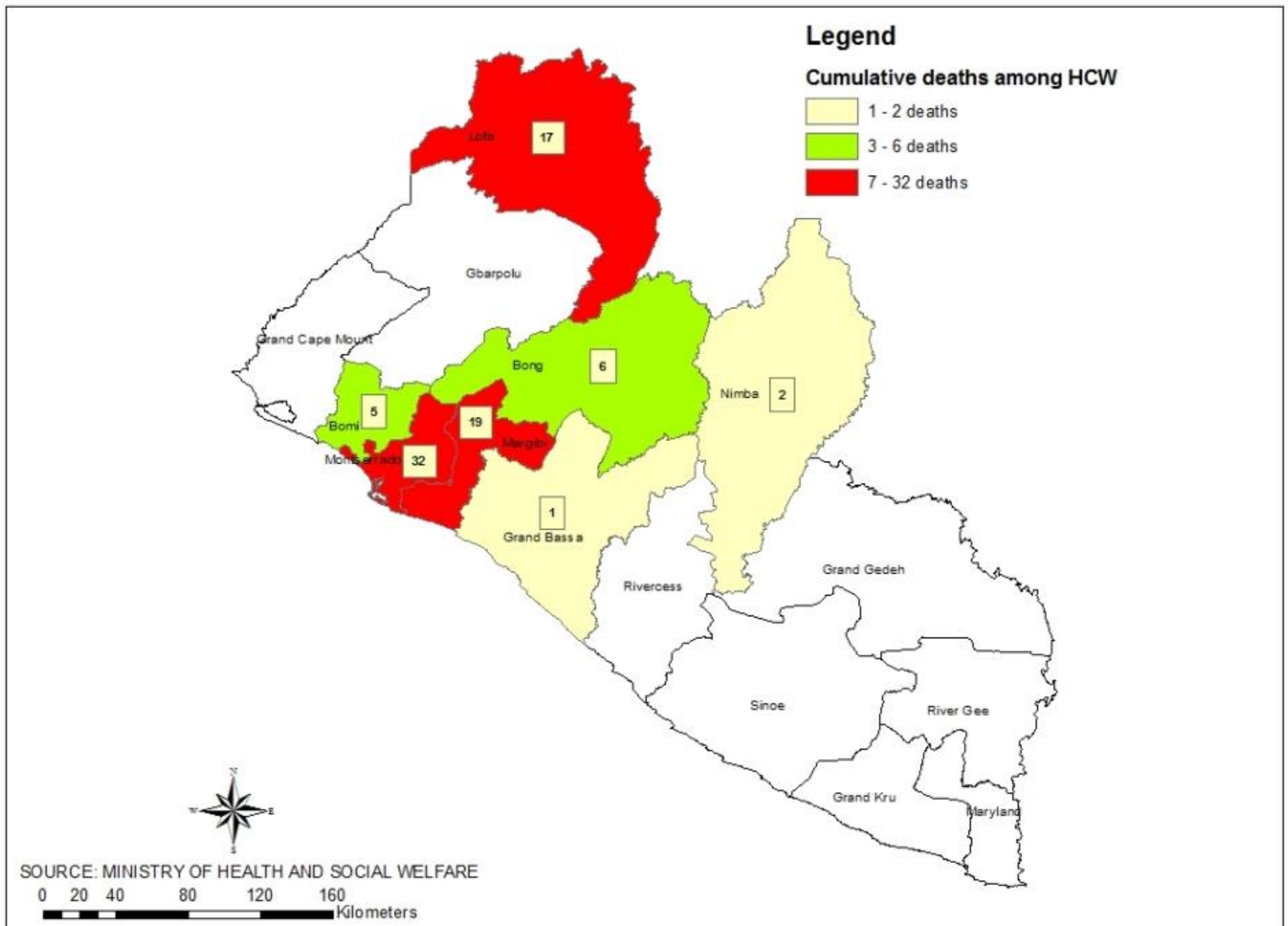
CUMULATIVE CASES OF EBOLA VIRUS DISEASE AMONG HEALTH CARE WORKERS SINCE MAY 29th TO SEPTEMBER 10th 2014



CUMULATIVE CASES OF EBOLA VIRUS DISEASE SINCE MAY 29th TO SEPTEMBER 10th 2014



CUMULATIVE DEATHS OF EBOLA VIRUS DISEASE AMONG HEALTH CARE WORKERS SINCE MAY 29th TO SEPTEMBER 10th 2014



Case Investigation

September 10th, 2014

CASE DISTRIBUTION	Montserrat	
# of calls for Live Cases Received	57	
# of calls for Live Cases Responded to	50	
# Calls of Live Cases Pending Response	0	
# of Cases Referred to Treatment Unit	15	
# of Suspected Cases Responded to	10	
# of Probable Cases Responded to	14	
# of Cases Pending Transfer for today	20	
Cumulative Cases Pending Transfer	51	
# of Calls that were not a Case	4	
# of Calls that callers could not be reached	7	
LIVE CASES INVESTIGATED PER ZONE		# of Hygiene Kits Issued
Zone 1 (JFK HOSPITAL)	11	3
Zone 2 (DUPORT ROAD)	3	2
Zone 3 (JAMES DAVIES)	5	2
Zone 4 (REDEMPTION HOSPITAL)	5	0
Cumulative (probable, suspected) cases	24	Total Issued: 7
# of Calls for bodies	60	
Zone 1 (JFK HOSPITAL)	16	
Zone 2 (DUPORT ROAD)	23	
Zone 3 (JAMES DAVIES)	8	
Zone 4 (REDEMPTION HOSPITAL)	13	
# of bodies with specimen taken	7	
# of Bodies that were not a case	0	
# of Bodies Removed	Unknown	
# of Homes sprayed	Unknown	
# of Health Facilities sprayed	Unknown	
# of psychosocial Counseling done	50	

Highlights

JFK ETU

- Total admission - 53 including 7 Health care Workers and 7 children
- Total number of confirmed cases -30, including all 7 Health care Workers
- New admission 15
- No discharge
- 7 deaths reported within the last 24 hours

ELWA II

- Total admission - 58
- Total number of confirmed cases - 39 including 3 Health Care Workers
- Total Suspected cases - 19
- Total number of new admission - 7
- 2 survivors
- 2 deaths within the last 24 hours.

Highlights

ELWA III

- Total admission as at the morning was 93
- Total number of confirmed cases - 93
- No new admission
- 14 Discharges (12 recovered following treatment and 2 suspected cases with negative lab results)

Highlights

- The World Health Organization (WHO) provided motivational funds to cover transportation and lunch for two months to the central data management unit

Bong County

- The new ETU has been officially turned over to the County Authority and County Health Team. It is awaiting admission of patients

Highlights

Lofa

- Total number of patients in Foya Case management center (FCMC) - 32
- Total probable cases is presently in the unit - 23
- Total confirm cases - 9

New Cases

- Total new admissions – 4

Death

- Total number of death - 4 (2 confirmed & 1 probable death at the ETU and 1 community death from Voinjama District)

Highlights

Montserrat

- 1828 (98%) of the 1859 contacts under follow up were seen by 4 contact tracing teams.
- Of the 1859 contacts being followed, 2 became symptomatic today.
- Of the 1859 contacts being followed, 87 completed 21 days today.
- Of the 22 deaths reported 9 were from ETUs and 13 from the communities.
- Total admission at Redemption Holding Unit - 28.
- Red Cross made available 12 contact tracers to be used in our current tracing structure. They will be assigned in New Kru Town, where there are more than 300 contacts as of today.
- Health promotion section completed verification of gCHVs to be trained by UNICEF on Friday of this week
- 30 volunteers from SEARCH, a local NGO, were trained in contact tracing

Highlights

Margibi County

- 147 contacts completed 21 days of follow-up
- Save the Children discovered (15) families in the Mamba-Kaba and Kakata Districts with a total of 40 vulnerable children whose parents have died from Ebola.
- Affected children, rejected by the Community in Dolo Town, are living in a school building

Highlights

Nimba County

- 2 probable deaths in Sehkinpa and Ganta
- One probable death in Gbor-Gainpa (Zoe-Geh)
- Africare donated \$100. USD worth of scratch cards to CHT to strength communication and 20 gallons of gas as monthly support to each of the District Health Teams for Surveillance/Case tracing and specimen collection
- The Surveillance/case tracing and psychosocial teams reunited one Ebola survivor with her family and community people in Cooper Village

Issues & Constraints

- PPEs nearing stock-out in the County
- The one ambulance for the transport of confirmed cases to the ETUs in Monrovia is inadequate